



SCHOOL, HOME & COMMUNITY – PARTNERS IN LEARNING

Valuing excellence in education & people who are nice to know

Chittaway Rd, Chittaway Bay 2261 Phone: 4388 2188

email: chittaway-p.school@det.nsw.edu.au

website: www.chittaway-p.schools.nsw.edu.au

Newsletter Term 4 Week 4 2020

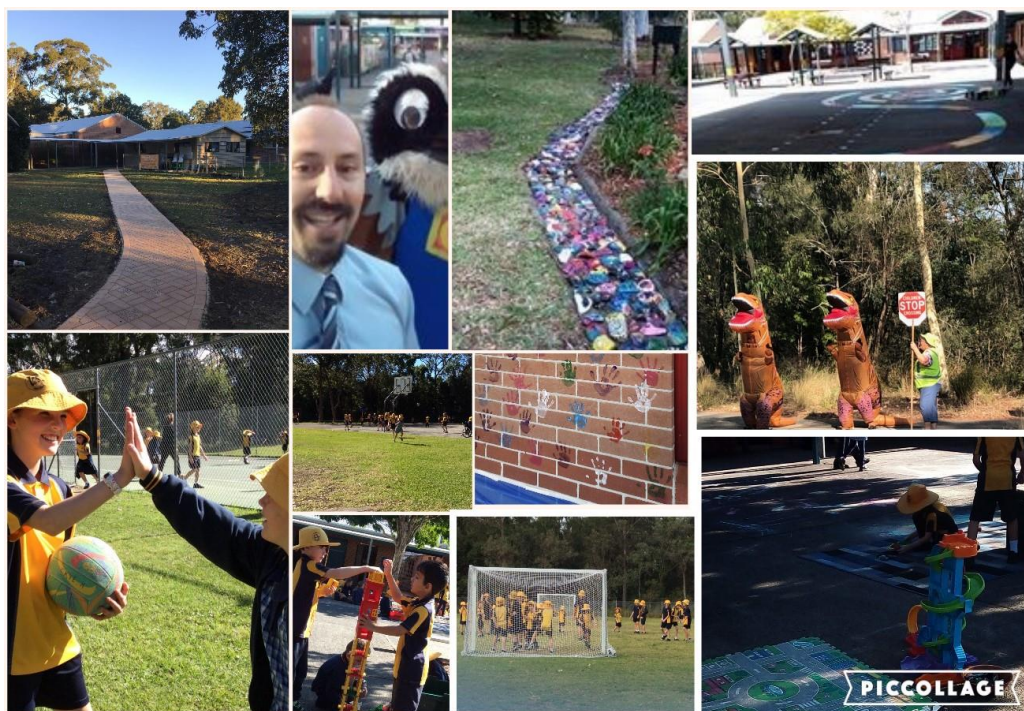
SAFE	RESPONSIBLE
<ul style="list-style-type: none"> Keep hands, feet and objects to yourself Follow adult instructions 	<ul style="list-style-type: none"> Right place, right time Take care of property
RESPECTFUL	ENGAGED
<ul style="list-style-type: none"> Care for others Use polite talk 	<ul style="list-style-type: none"> Do your personal best Allow others to learn



Dates for your diary:

Thursdays up to week 8	Gymnastics for K-2
Mon 2 Nov – Fri 13 Nov	Henny Penny Hatching - Kindy
Tues 10 Nov – Thurs 12 Nov	Stage 3 Bathurst Camp
Wed 11 Nov – Fri 13 Nov	Stage 2 Aussie Bush Camp
Mon 7 Dec	Awards Ceremony
Mon 14 Dec	Yr 6 Farewell
Tues 15 Dec	Party/ Picnic Day
Wed 16 Dec	Last day for students and teachers

Chittaway Bay Public School



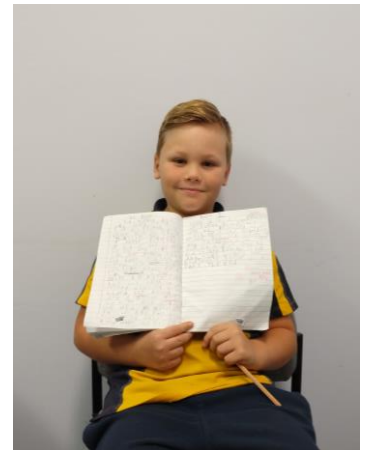
PICCOLLAGE

Week 4

It has been wonderful seeing all of our delightful students working so hard over the first few weeks of term. I had some tremendous writing shared with me from 4/5M. They are doing some great work. I also had Ryley pop over and show me his writing. Well done on some detailed work Ryley.

There are expected to be some updated guidelines this week. Please be mindful of this point:

- Non-essential adults are still not permitted on school sites. This includes our long-suffering parents and carers. Thanks for supporting and helping keep everyone safe. We have had a few parents entering the site and going beyond the office. Please help everyone by doing the right thing and thank you to the vast majority of parents for supporting our guidelines each and every day.



Selective High School

Just a reminder for current Year 5 students and their families regarding Selective High School placement for those interested.

Detailed instructions on how to apply online are available at <https://education.nsw.gov.au/public-schools/selective-high-schools-and-opportunity-classes/year-7>

The application website is open now and closes on 16 November 2020. You must apply before the closing date.

Kindergarten 2021

We look forward to welcoming our 2021 Kindergarten students to school this coming Friday. The details for sessions are below. On the final session, students will receive an information bag.

Orientation for learning: Friday 6 November, Monday 9 November, Tuesday 17 November

- Time: 9:30am-10:30am

Camps

Next week we will farewell our Year 5 and 6 students as they attend a three-day camp to Bathurst and the surrounding areas to support learning in our History Key Learning Area. They will depart Tuesday Nov 10 and return Thursday Nov 12. Please note the later departure of 7:15am and the earlier arrival on Thursday at approx. 5pm. We will also have our Year 4 students attend the Great Aussie Bush Camp, participating in personal development activities and challenges from Wednesday Nov 11 and return Friday Nov 13. Year 4 students are expected to be at school at normal time and will depart at approx. 11am. We know they will have a terrific time at their respective camps.

Student Leadership

Our Year 5 students will begin the nomination process for positions in our student parliament for next year. This process begins with nomination forms that are due this week. If you have a child in Year 5 that is interested, please discuss the requirements and what expectations/requirements are expected for these roles. Students are expected to give up part of their play time throughout the year, speak at assemblies, ceremonies and special events, represent the school at functions, that may be outside of school hours (ANZAC day for example). Obviously there are behavioural and role modelling expectations as well. We look forward to seeing our nominations and then how the voting falls to reveal our leadership team for 2021.

School Excellence in Action

I hope some of you have chosen to engage in the video content of our SEiA. This model of video with sharing of information and some opportunity to provide feedback on the Google forms is hopefully a good compromise from school workshops, which we are currently not able to do. If nothing else you may have enjoyed some of the sharing of information. Please provide feedback by the end of this week (Nov 6) on the Google Forms. See Skoolbag or our Facebook page for details and accessing the videos.

Staff Development Days

The Department of Education decided last week to change the Staff Development day structure from 2021. There will now be two SDDs at the start of the year and only one at the end of year. Students will still attend for the

same amount of days. There will be no change to Term 2 and Term 3 SDD, which will occur on the first day of those terms. For your reference, the dates are as follows: SDD1 Wednesday Jan 27, SDD 2 Thursday Jan 28, Mainstream Yr1-6 return Friday Jan 29, Support Unit Students return Monday Feb 1, Kindergarten students begin Wednesday Feb 3.

Annual Awards Ceremonies

We will still be holding ceremonies for academic and school excellence at school. Unfortunately, at this stage it will be student only ceremonies. Students will be recognised and then photographed during the event. All photos of students with publishing permission will be posted to social media so that we can share this event with our families. Due to the number of students with some privacy concerns we are not in a position to livestream these ceremonies. We will aim to record and edit out any privacy issues to hopefully enable us to share this with you. For those of you planning end of year activities or potential trips away, be aware the ceremonies will be held on Monday December 7. Should there be further updates or changes to guidelines, we will let you know.

Moving or Leaving?

If you are planning on moving from the area and your child will no longer be enrolled at CBPS for 2021, can you please let us know at your earliest convenience. This can have a significant impact into our planning for class structures and have staffing implications.

Behaviour Outside of School

It has been brought to the school's attention that there was some unsavoury behaviour at the local park involving students in uniform from Chittaway Bay PS and Killarney Vale PS late last week. This behaviour included: swearing in public and some intimidation by students as a group (you may understand this as pack mentality). These are not values that are representative of our Chittaway Bay community. Please take this opportunity to discuss expectation of behaviour and speak with your child about how they conduct themselves in a public place.

Seasons for Growth

Another successful year of Seasons for Growth at CBPS. A big thank you to both Mrs McVey and Mrs Horncastle for being our caring companions. Also, a big thanks to Mrs Horton for coordinating this again in 2020. All students enjoyed their Seasons for Growth sessions and we always feel that they have benefited from taking part.

Student Profiles for bullying

Students who are more likely to be bullied are also more likely to:

- feel disconnected from school and not like school
- lack quality friendships at school
- display high levels of emotionality that indicate vulnerability and low levels of resilience
- be less well accepted by peers, avoid conflict and be socially withdrawn
- have low self-esteem
- be relatively non-assertive
- be different in some way.

Students who are more likely to bully others are more likely to:

- feel disconnected from school and dislike school
- demonstrate good leadership skills
- demonstrate good verbal skills and ability to talk themselves out of trouble
- demonstrate low levels of moral reasoning and high levels of egocentric reasoning
- believe that the use of aggression is an acceptable way to achieve their own goals
- be preoccupied with their own goals and not concerned about the rights of others
- show more emotional instability, as do those students who support them
- be reasonably popular but more disliked than non-bullying peers
- be less anxious than peers
- have high self-esteem and an inflated view of themselves, especially about their social behaviour and influence
- have lower levels of empathy than other students
- have poor impulse control and poor anger management skills

- be less likely to consider the negative consequences of their actions on others or on their own relationships over time.

Attendance Matters!

What if my child has to be away from school?

On occasion, your child may need to be absent from school. Justified reasons for student absences may include: being sick, or having an infectious disease

- having an unavoidable medical appointment
- being required to attend a recognised religious holiday
- exceptional or urgent family circumstance (e.g. attending a funeral)

Following an absence from school you must ensure that within 7 days you provide your child's school with a verbal or written explanation for the absence. However, if the school has not received an explanation from you within 2 days, the school may contact you to discuss the absence. Principals may decline to accept an explanation that you have provided if they do not believe the absence is in the best interest of your child. In these circumstances your child's absence would be recorded as unjustified.

When this happens, the school will discuss their decision with you and the reasons why. Schools may request medical certificates or other documentation when frequent or long-term absences are explained as being due to illness. Schools may also seek parental permission to speak with medical specialists to obtain information to collaboratively develop a health care plan to support your child. If the request is denied, the school can record the absences as unjustified.

Have a great week of learning CBPS.

Nish Green
Principal

Library News

Overdue Books

Please check at home for any overdue books and return to the library.


Thank You
A.Bailey

Bookclub

Book Club provides a fun & convenient way of bring the best in children's literature into your home. When ordering from Book Club, you are not only helping our children, but you are also helping our school – 20% goes back to your school in Scholastic rewards which are used to buy library/teaching resources.



LOOP is the Scholastic Book Club
Linked Online Ordering & Payment platform for parents.
To order and pay for Scholastic Book Club by credit card visit:
www.scholastic.com.au/LOOP



School App



Communication is an important part of any school and helps with the smooth running and organisation for both families and the school. Our school has a school app which can be downloaded onto your phone. Chittaway Bay Public School Skoolbag App is for parents and the school community. Download this App to be kept up to date with everything that is happening at CBPS. It features Events, News, Newsletters, Documents, and push notification alerts direct from the School.

School Banking – School Banking has resumed.

School Banking day is Wednesday. Each week you need to hand your bank book to your teacher for collection. If you are interested in opening a Commonwealth Bank Youthsaver account for your child you can visit commbank.com.au/schoolbanking and click on the link to open a Youthsaver account.

P&C Cookbook

Unfortunately we have had to make the decision to delay the printing of the school cookbook till next year due to not having enough recipes submitted and pre order forms returned to the office. The school cookbook would be a wonderful keepsake for you and your children but we really need your support to make it happen. Cookbook recipe submissions will remain open until further notice and can be made through

www.publishedauthors.com.au

We hope all our children and families will contribute and support our amazing school.

Canteen Online

The canteen now has online ordering.

Just go to flexischools.com.au to register to begin ordering online.

Canteen Roster

Term 4– Week 4

Mon	2/11:	closed
Tues	3 /11:	K Donnelly, J Kelly
Wed	4/11:	K Donnelly, S Reynolds
Thurs	5/11:	K Donnelly, A Hancock
Fri	6/11:	K Donnelly, S Ottley, N Hillier

Term 4 – Week 5

Mon	9/11:	closed
Tues	10/11:	K Donnelly, M Giles
Wed	11/11:	K Donnelly, M Giles
Thurs	12/11:	K Donnelly, A Hancock
Fri	13/11:	K Donnelly, A Hancock

Term 4 – Week 6

Mon	16/11:	closed
Tues	17/11:	K Donnelly, A Hancock

Please phone Karen Donnelly on the **Canteen mobile phone - 0421 016 640**

Closed in shoes must be worn at all times in the canteen. Thongs and sandals are not allowed due to Health and Safety regulations.

The Uniform Shop – open Term 3 Please place your orders in the white box and they will be filled on a Friday.

Fridays at 8.45 – 9.30am (school term only)

In the community room – Lay-bys available

Orders and money, marked “Uniform Shop” may be placed in the box in the Office.

Our uniform is black shoes, no coloured laces etc, please.



Online ordering is here!

The fast and secure way to order and pay online. From your mobile, tablet or desktop.

Our school now has a great online ordering system called Flexischools. As well as being convenient for parents, online orders are faster and easier to process - so it helps to simplify everyone's day!

CASH FREE, HASSLE FREE **PAY ANYWHERE, ANYTIME** **SAFE & SECURE**

Take advantage of this convenient new service. Go to flexischools.com.au and click: **register**.

[LOGIN](#) [REGISTER](#)

flexischools



GOSFORD HIGH SCHOOL

Consider public education at the No.1 High School on the Central Coast.

Applications open NOW for 2022



Key Dates

Application website opens
13th October 2020

Application website closes
16th November 2020

You must apply before this date.

Test centre and test authority advice
released 25th February 2021.

Selective High School Placement Test
11th March 2021

Placement outcome information
released 2nd July

For any enquiries, call GHS on
(02) 4325 2048

Virtual tours will be available on the
GHS website soon.

Application website:

<https://education.nsw.gov.au/public-schools/selective-high-schools-and-opportunity-classes/year-7>



GET FITTED BY THE EXPERTS TODAY

In Partnership with

CHITTAWAY BAY PUBLIC SCHOOL

**\$5 DONATED
BACK TO YOUR SCHOOL**

Everytime you buy a pair of shoes.

The School Rewards Program is a great fundraising opportunity, with \$5 from every pair of shoes purchased being donated back to your school.

This applies to the whole family across our fantastic range of school, sports, work and casual shoes.

Ask one of our friendly team in store for more details!

*Visit www.theathletesfoot.com.au/school-rewards for more details



Tuggerah
02 4353 4447

Teeballers wanted!

We train locally at Kurraba Oval and play at Bateau Bay. All abilities welcome.

Call or sms Jess on 0422508623

Jesse Trigg
Wolvettes Softball Club



Casual Work

Casual positions - Multiple locations across Hunter Region (8658)

Help protect our vibrant school communities

Become a Casual School Crossing Supervisor!

- Keep our kids, parents and teachers safe on the road
 - Be a second pair of eyes for our local motorists
- Earn an income and still have time to live your life to the fullest

Shifts fall between the school zones hours 8.00am to 9.30am and 2.30pm to 4.00pm,
with a minimum of one, one hour shift as and when required
Monday to Friday during the school term.

Does this sound like you?

- ✓ Reliable in good or bad weather
- ✓ Good communication skills
- ✓ Community spirit
- ✓ Positive energy

✓ If it does, visit jobs.transport.nsw.gov.au to apply today!

✓ Applications close Wednesday, 28 October 2020





Chittaway Public School

Be taught by NCAS accredited coaches all with Working with Children checks International coaching qualifications & former Australian Team members.

Classes are Fun, and suitable for children of all levels both male & female.

6-8yr olds – Thursdays: 4.30pm

9-12yr olds – Thursdays: 5.30pm

The Least Expensive Martial Arts School on the Central Coast

\$150.00 per 10 week school term - \$100.00 for siblings



LEARN HOW TO FALL CORRECTLY

LEARN SELF CONFIDENCE & SELF DEFENCE

LEARN JUDO IN PREPARATION FOR OTHER CONTACT SPORTS

Chittaway Public School Hall

ENQUIRIES:

www.judocentralcoast.com.au FACEBOOK: [judocentralcoast](https://www.facebook.com/judocentralcoast)

Shane.alvisio@gmail.com 0410 044 205

Co-Ordinator of Judo Central Coast School Program is a former School Teacher,
Director of Judo Australia, Executive of NSW Olympic Council, Int. Judo Fed. Qualified Coach

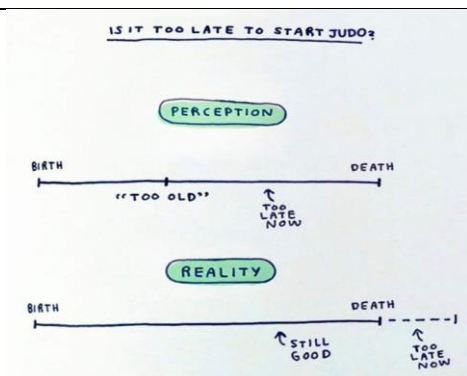
JUDO – The Olympic Sport Largest Sport in the World*

Judo is designed so it can be practiced by all ages, both male and female. Safety is paramount, with all participants being taught to fall correctly and avoid injury. Falling correctly is an invaluable skill that can be utilized when participating in other sports.

Flexibility and stretching exercises are part of every Judo session and unknowingly your body is engaged in isometric strength training, while you are pushing and pulling your opponents and learning to get them off-balance. Judo is a fun grappling activity and is more closely related to wrestling because there are no kicks or punches in Judo as there are in other martial arts.

*Judo is the largest sport in the world, when considering the number of National Federations.
Judo is the second largest participation sport in the world.





MUMS JUDO

Thursdays 6.30pm – Chittaway Bay Public School Hall

Commencing Thursday 15th Oct.

A great opportunity to start a group physical activity and build confidence with other mums who are willing to try something new !
Be taught by a female black belt and Chittaway mum of two teenage daughters, who has a PhD in Exercise Physiology and lectures at Ourimbah University.



This session has been initiated by a couple of our judo mums who want to try the sport, and they are looking for others to join them.

No experience required.

No cost for the first 4 week trial period.

No mat fee for the entire term – Just \$140.00 registration/insurance annual fee with Judo NSW.

We would like more females in our Judo Club

www.judocentralcoast.com.au FACEBOOK: [judocentralcoast](https://www.facebook.com/judocentralcoast)
Shane.Alvisio@gmail.com or 0410 044 2

CHITTAWAY BAY BAND

JOIN THE BAND!

Is your child interested in joining the school band?

The school band is now taking enrolments for 2021 and is open to all students currently in years 2-5.

No prior experience needed!

During Term 4 students will see a **band demonstration** at school that highlights the different instruments available for tuition. After this demonstration they will receive a green *Expression of Interest* note providing introductory information.

What do you need to do?

1. Carefully read the green *Expression of Interest* and then register your child's interest in joining the band online at <https://www.teachingservices.com.au/eoi>
2. Once you register online a TSA tutor will meet your child to help them assess which instrument they are most suited to**
3. The results of this instrument trial will be sent home with enrolment information

Learning an instrument in an ensemble is a great way to experience the social, educational and personal benefits that music and the arts have to offer! TSA provides a variety of tuition options as well as instrument hire and sales to help parents give the gift of music to their children.

TSA is a registered COVID-safe provider and delivers instrumental programs with a focus on inclusion, student engagement and well-being.

***Instrument trials will take place within strict COVID-safe guidelines and will include a basic aural and rhythm assessment among several other activities which measure your child's suitability for each instrument.*



(02) 9651 7333

enrolments@teachingservices.com.au

www.teachingservices.com.au



BERKELEY VALE NEIGHBOURHOOD CENTRE



NILS Loans - No Interest Loan Scheme where there are no fees, no interest, no charges. NILS loans can be used for essential goods and services. By appointment only

EAPA - Energy Accounts Payment Assistance is for those times when you're having difficulty paying your current household energy bill because of a short-term financial crisis or emergency, such as unexpected medical bills, or reduced income due to COVID-19 By appointment only

Food Relief - occasionally we get in fruit, vegetables, bread and packed hampers from our sister site, Bateau Bay Neighbourhood Centre (BBNC) and have it available at our Berkeley Vale Centre. If we have nothing available we can check with BBNC to see what they have received for that day.



Linking the community

Drop in and say hi, have a cuppa, chat for awhile
Or you may see us set up somewhere in the area with a pop up stall so come over and say hello

Information/Referral/Advocacy - Do you need information about the services in our community that may be able to help we can help there and we can provide a referral if needed. Having difficulties with a service have a chat with us and we'll see if we can advocate on your behalf or refer you to the right service to assist you.

Drop in or phone

Emergency Relief - in partnership with Wyong Neighbourhood Centre we are able to provide short term relief to purchase some food from Coles via a gift card or get some petrol through a Woolworths gift card. This is for people in the Berkeley Vale, Chittaway Bay/Point and Glenning Valley suburbs only. If you are from other suburbs we can refer you to other agencies. By appointment only

Activities - throughout the year we will run workshops on parenting, 1st Aid, basics cooking, kids school holiday activities, talks etc. These activities are usually only costing a gold coin donation. Information regarding our activities are posted on our Facebook page.

Located: Office 3 The Berkeley Centre, 3 Heather Ave, Glenning Valley
Phone: 0490 538 494
Email: manager@bvnc.org.au
Facebook: <https://www.facebook.com/Berkeley-Vale-Neighbourhood-Centre>

ONE CULTURE MARINERS FREE INCLUSIVE FOOTBALL EVENT

Join us for a FREE fun day of football, music, player visits, giveaways & so much more!

Sunday 1st of November 9am - 11am @ The Football Grounds, 224 The Entrance Rd, Erina NSW

Register now for this event or get in contact with us to find out more!

School Travel for 2021



2021 school travel applications are now open

Applications for student travel in 2021 opened from Monday 12 October 2020.

Students who require a School Opal card or travel pass for 2021 can now [apply](#) online. A new application should be submitted if a student is applying for a school travel pass for the first time or requesting an additional pass as a result of a new shared parental responsibility situation (e.g. joint custody).

Students who have changed school/campus, changed address, repeated a year or received an expiry notification from Transport for NSW for their school travel entitlement should [re-apply or update their details](#).

*Applications must be completed by the student's parent or legal guardian if the student is aged under 16 years. Students 16 years and over must complete the application form themselves.

Where there is a change of distance eligibility based on a student's grade, the system will automatically update a student's entitlement if they meet the new criteria. If they do not meet the new [eligibility criteria](#), they will receive an expiry notification via email.

Students who have an entitlement approved under a medical condition which is due to expire will receive a notification advising them to re-apply.

[Term Bus Pass](#) holders will receive a notification to re-apply.

If a student needs to update their information or re-apply, they should go online to <https://apps.transport.nsw.gov.au/ssts/updateDetails>

Applications need to be submitted before **31 December 2020** to ensure that current student entitlements are updated and their current entitlement/card remains valid. If their application is submitted after 31 December 2020, the system will automatically cancel an entitlement/card and a new one will need to be issued.

Students in the Opal network applying for a SSTS or Term Bus Pass entitlement for the first time will receive their card at their nominated postal address. Cards will be mailed out from January 2021.

Students residing in Rural and Regional (R&R) areas should receive their travel pass at the commencement of the new school year from their nominated operator, this may be distributed via the school or sent direct to their address. **Note:** some R&R operators do not issue travel passes. Students/Parents should confirm with their nominated operator if they do not receive a pass.

New Concession Entitlement Cards

Transport for NSW will be replacing the below cards with Transport Concession Entitlement Cards (TCEC) from October 2020:

- Senior Secondary Student Concession Card (16 years and over) – also used by Mature Secondary Students (18 years and over), Distance Education Students and Home School Students
- Proof of Age card (when a student under 16 years of age looks older)
- Boarder Rail Pass.

All previous cards will be valid until they expire. Students who require a Transport Concession Entitlement Card should speak with their school administration staff.

Enquiries regarding school student travel can be submitted to Transport for NSW at:

<https://transportnsw.info/contact-us/feedback/passes-concessions-feedback>



Could \$500 help you with school costs?

Join Saver Plus and we'll match your savings, dollar for dollar, up to \$500 for school costs.

 laptops & tablets

 lessons & activities

 uniforms & shoes

 books & supplies

 sports fees & gear

 camps & excursions

To join Saver Plus, you must be at least 18 years or over, have a child at school or attend vocational education yourself, have regular income from paid employment (you or your partner), have a current Health Care or Pensioner Concession Card and be in receipt of an eligible Commonwealth social security benefit, allowance or payment*



everyone's family

* many Centrelink payments are eligible, please contact your local Coordinator for more information.

Saver Plus is an initiative of the Brotherhood of St Laurence and ANZ, delivered in partnership with Berry Street, The Benevolent Society and The Smith Family and other local community agencies. The program is funded by ANZ and the Australian Government Department of Social Services. Go to www.ds.gov.au for more information.

Contact
your local Saver Plus
Coordinator

Phone or SMS
your name and postcode to
1300 610 355

Email
CentralCoastSP@
thesmithfamily.com.au

Online
saverplus.org.au

Find us on Facebook 


saverplus



**1 TEAM | 7 OFFICES
COVERING OUR LAKES**

If you're buying, selling or leasing call us
4388 8888

R J STIMSON

CHARTERED ACCOUNTANT ABN 78 694 488 716

Personal and Professional Service, All Accounting, Taxation and Business Requirements for Individuals, Partnerships, Trusts, Companies and Superannuation Funds.

After Hours Appointments Available

Contact Russell on Ph 4355 4898/ 0422 953 779

Email: russell@rjstimson.com.au

Jo-Anne Whitelaw Piano – Keyboard Teacher 0418 387 391

The lessons cost \$18 per lesson, with a small discount for siblings, and run for 45 mins per lesson.

Keyboards will be provided for the lessons, and there will be a fee for the books used in the lessons.

If you are interested in your child taking part in these lessons, please notify the school office.



Steve Forrest Music Tuggerah

Supplying the world's finest instruments

Matt Anderson
Manager

112 Pacific Highway
Tuggerah, NSW 2259

(02) 4353 5490

www.steveforrestmusic.com.au
matt.steveforrestmusic@gmail.com

Find us on Facebook, Instagram and Twitter



THE ENTRANCE DISTRICT CRICKET CLUB



ccca.nsw.cricket.com.au @theentrancecricketclub tedcc_gulls theentrancecc.nsw.cricket.com.au

TAKE **\$100** OFF REGISTRATION
BY USING THE ACTIVE KIDS VOUCHER

Go to:
PLAYCRICKET.COM.AU
and search for
The Entrance Cricket Club

JUNIOR BLASTERS (5-7YRS)

60 Minute x 12 Week Saturday Morning Program
November 2020 to February 2021

Each Junior Blasters Starter Pack includes

T-shirt with your name on it
Bucket hat in your choice of Big Bash team colour
Personalised plastic bat
Rubber ball



MASTER BLASTERS (7-10YRS)

90 Minute x 12 Week Saturday Morning Program
November 2020 to February 2021

Each Master Blasters Pack includes

A players cap in your choice of Big Bash team colour
Activity Tracker Watch



BLASTERS PROGRAM: \$120



service.nsw.gov.au/transaction/apply-active-kids-voucher



THE ENTRANCE DISTRICT CRICKET CLUB



ccca.nsw.cricket.com.au @theentrancecricketclub tedcc_gulls theentrancecc.nsw.cricket.com.au

TAKE **\$100** OFF REGISTRATION
BY USING THE ACTIVE KIDS VOUCHER

Go to:
PLAYCRICKET.COM.AU
and search for
The Entrance Cricket Club

GIRLS AND BOYS JUNIOR CRICKET (9-16 YRS)

2-3 HOUR GAMES
SATURDAY MORNING
NOVEMBER 2020 - MARCH 2021



**Hat, Playing Shirt, Training Shirt
and Shorts Included!**

JUNIOR GIRLS: \$125
JUNIOR BOYS : \$160



service.nsw.gov.au/transaction/apply-active-kids-voucher



1st Berkeley Vale Scouts



1st Berkeley Vale Scouts are now Recruiting



Do you want exciting adventures, fun, make new friends and learn new skills such as:

Camping, Hiking, Canoeing, Navigation, First Aid, Abseiling, Climbing, Caving, Sailing, Leadership Skills, Survival Techniques and anything else you may wish?

Open to Boys and Girls, age groups start at five, eight, eleven, fourteen years old and Adults.

Active Kids Vouchers welcome!

Come try us out. Three visits for free!



Please ring Geoff Webster Group Leader on 43882783 for more information.



2020/21 Cricket Registrations Now Open

- **Junior Blasters** (Girls & Boys - 5 to 8 years)
 - Saturday mornings - \$120
- **Master Blasters** (Girls and Boys - 8 to 10 years)
 - Saturday mornings - \$120
- **Junior Boys** (9 - 16 years)
 - U11s - Saturday mornings \$125
 - U12s - U16s - Saturday mornings \$155
 - Youth comp. (on turf) - Friday afternoons \$155
- **Junior Girls** (9 - 16 years)
 - Girls Sixers League (U11s - U12s Saturday mornings) \$75
 - Girls Youth Comp. (U12s - U16s Friday afternoons) \$75

Register at www.playcricket.com.au
Search for 'Wyong District Cricket Club'
Use \$100 Active Kids Voucher
New and returning players welcome
Season commences 7 November





HAVE A BLAST. BE PART OF THE CREW!

Get into Woolworths Cricket Blast. It's a fun and active program for kids of all abilities - whether it's your first time with a bat or you're a backyard cricket star!

- ✓ It's easy to join a crew and make awesome new friends.
- ✓ Wear the colours of your Big Bash heroes.
- ✓ Parents warm up, you can join in too!
- ✓ Outdoors, non-contact.



JUNIOR BLASTERS

AGES 5-7 | 60 mins | 6+ weeks

Learn new skills, including catching, throwing and teamwork, through fun game based activities.

Sign up now for your Starter Pack. Returning Junior Blasters score a Returner Pack with a Backpack, Ball and choice of bonus item!



STARTER Kit



RETURNER Kit



MASTER BLASTERS

AGES 7-10 | 90 mins | 6+ weeks

Everyone gets a chance to bat, bowl and field in short, modified games of cricket. For kids with basic cricket skills.

Sign up now for your Master Blasters Pack!



You could PLAY Woolworths Cricket Blast for Free!

Thanks to the NSW Government, every student (K-12) is entitled to 2x\$100 Active Kids vouchers each calendar year. **Remember to use your voucher when you sign up at playcricket.com.au**



Register now @ playcricket.com.au

Monday 21st- Thursday 24th December

Surf Adventure



Surfing, Snorkelling,
Beach fun & onsite
adventure activities!



7am- 5pm Daily! Breakfast through to afternoon tea provided! \$80 per day. Minimum 2 day booking required Discounted price for a 4 day booking! **Ages 8- 15 years!**

Registration Link: <https://docs.google.com/forms/d/1lKe7AJK896VWDtlfw7q1uOoF6M2l9Dvk9pQ97l1pbrY/edit>

Registrations Close 27/11/2020

Join us in fun, friendship and Christian fellowship.

Contact us: 4355 3500



Opal for school students

The School Opal card gives eligible school students free

Or subsidised travel on public transport

between home and school

On trains , buses, ferries and light rail in the

Opal network

Don't forget a Child/Youth Opal card

It's important to remember that the School Opal card is only for travel to and from school on school days only

and doesn't cover travel to After School Care, school excursions, sport and other activities away from school, so it's a good idea to get a [Child/Youth Opal card](#) for personal travel.

Are there any restrictions on when and where I can use a School Opal Card?

Yes, a School Opal Card is for approved travel on School days only between your home and school, it covers travel that commences between 6:30am and 7pm weekdays only.

For travel outside these times you should use a Child/Youth Opal card.

What should I do if my School Opal card is lost, damaged or stolen?

Report it online and order a replacement School Opal card and a fee may apply. By doing this, the old School Opal card will be cancelled and a new one will be mailed to the customer's preferred address within five to seven days. While waiting for a replacement card, show the driver a copy of the receipt or use a child/youth Opal card to travel if eligible.

Are there any alternatives to the School Opal card for ineligible students?

Students who are not eligible for a School Opal card may be eligible to purchase a term bus pass from Transport for NSW or they can get a Child/Youth Opal Card from more than, 2100 retailers, online at opal.com.au or by calling 13 67 25 (13 OPAL).

REMEMBER TO TRAVEL WITH A VALID TICKET